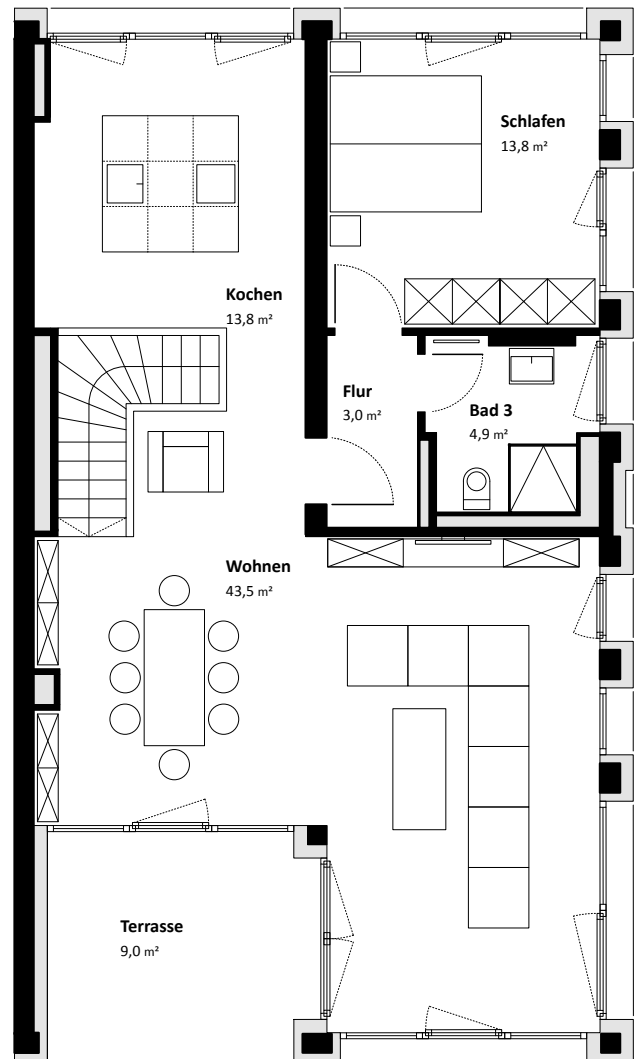
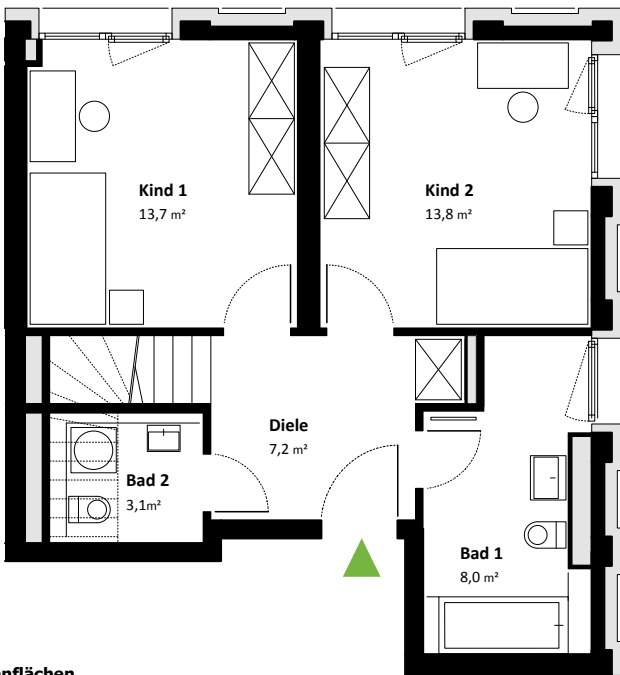
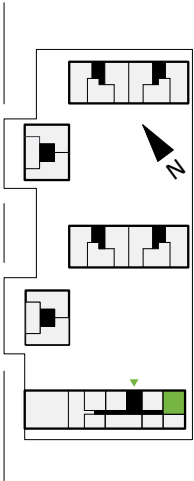


AS34.04.02

Alma-Siedhoff-Buscher-Weg 34/4



Wohnflächen

Wohnen	43,49 qm
Kochen	13,79 qm
Schlafen	13,66 qm
Kind 1	13,76 qm
Kind 2	13,76 qm
Bad 1	8,04 qm
Bad 2	3,15 qm
Bad 3	4,92 qm
Diele	7,21 qm
Flur	3,02 qm
Terrasse (0,5)	4,52 qm

Gesamt 129,74 qm

